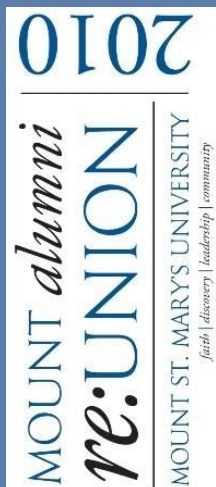
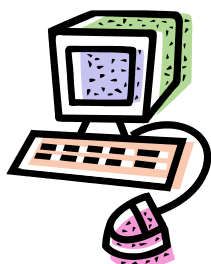


ALUMNI GOLF TOURNAMENT



**ONLINE
REGISTRATION IS
NOW AVAILABLE!!!**



To register for the golf tournament using our quick and easy online process, just visit msmary.edu/reunion and click on Reunion Golf!

It's as easy as 1-2-3!



**The Links at
Gettysburg**

601 Mason Dixon Rd.
Gettysburg, PA

For course information and directions go to:
<http://www.thelinksatgettysburg.com>

Part of Alumni Reunion Weekend

**Saturday, June 5, 2010 at 8:00 a.m.
The Links at Gettysburg**



JOIN US FOR A DAY OF GOLF!

This is the 34th year of the Alumni Golf Tournament, which will once again be held at the Links at Gettysburg. This is a part of Reunion Weekend you won't want to miss!

The tournament fee is \$125 and includes your greens fees, a golf cart, lunch, a special gift, and use of the beverage cart (with complimentary soda and water, and beer for purchase) - **NO BYOB!**

A luncheon (**included in your fee**) will take place immediately following the tournament, back at the Mount.

Over \$1,000 in prizes will be awarded! The tournament is based on a "scramble format" with three flights and three closest to the pin contests. **Plus, we will be giving away many door prizes** and special gifts to our golfers.

All proceeds from the tournament will benefit the Rev. Carl J. Fives Alumni Scholarship Program, which benefits several Mount seniors annually.

If you have any questions regarding the 34th Annual Alumni Golf Tournament, please do not hesitate to contact the Office of Alumni Relations at 301-447-5362 or e-mail us at alumni@msmary.edu.

IMPORTANT INFORMATION, DRESS CODE, ETC.

General Information

- Sign up quickly because space in this year's tournament is limited.
- Golfers are expected at Registration no later than 7:30 a.m.
- Priority for registration is given to alumni and spouses, faculty, administration, and staff on a "first come, first served" basis
- No individual or team registration accepted without payment in full

- Alumni guests may participate, if spaces are available
- Tickets for lunch only are available for \$15 per person

Dress Code

- A golf shirt with traditional collar is required
- The Links requires all golfers to wear "soft-spikes" or spike-less golf shoes

Driving Range

- Will be open the morning of the tournament from 6:30 – 7:30
-

Questions?

Contact Maureen Plant, the Director of Alumni Relations:

- 301-447-5362 (office)
- alumni@msmary.edu

**SEE NEXT PAGE FOR TOURNAMENT
SPONSORSHIP OPPORTUNITIES.**

ALUMNI GOLF TOURNAMENT

ONLINE REGISTRATION IS AVAILABLE!!!!
VISIT WWW.MSMARY.EDU/REUNION AND CLICK ON REUNION GOLF

Sponsorship Opportunities

GOLD LEVEL

\$500

Includes a sign at lunch as well as recognition in all tournament publications

SILVER LEVEL

\$250

Includes a sign on the beverage cart and recognition in all tournament publications

BRONZE LEVEL

\$150

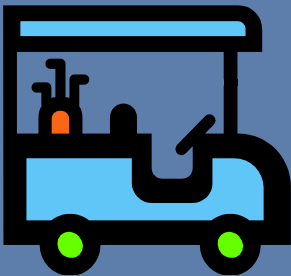
Hole Sponsor

– includes a sign at the hole or tee

\$50

Cart Sponsor

– includes recognition on golf cart signs



Please check the box of one of the sponsorships above and fill out the payment form to the right.

REGISTRATION FORM

Please complete the following form and mail with payment to the Office of Alumni Relations, Mount St. Mary's University, 16300 Old Emmitsburg Road, Emmitsburg, MD 21727. Please fill out only **ONE** registration form per player/team.

Team/Company Name _____

Your Name _____

Address _____

City/State/Zip _____

Phone _____ E-Mail _____

Please check one:

Please place me in a foursome. My USGA Handicap is _____. (If you do not have a USGA Handicap, please indicate your average score for a par 72 round: _____).

I will be playing with (please indicate USGA Handicap - or average score - for each player):

1. _____ 2. _____
HC: _____ HC: _____

3. _____ 4. _____
HC: _____ HC: _____

PAYMENT

Sponsorship _____ = \$ _____

Name/company as you would like it to appear on signage: _____

Payment for _____ (enter number of golfers) at \$125 each = \$ _____

Payment for _____ (non-golfers/lunch only) at \$15 each = \$ _____

Total Amount Enclosed = \$ _____

Check # _____ (Please make checks payable to Mount St. Mary's University.)

OR

Credit Card (circle one): VISA MASTERCARD AMEX DISCOVER

Card # _____ Name on Card _____

Exp. Date _____ Security Code _____

Signature _____ Date _____